



Certificate of Analysis

Regulatory Compliance Testing

1 of 3

ICAL ID: C 20230802-014
Sample: CA230802-005-012
Purple Dream - 1g PUSHcart
Strain: Purple Dream - 1g PUSHcart
Category: Concentrates & Extracts
Type: Vape

LB Atlantis, LLC
Lic. # C11-0000369-LIC
1445 SANTA FE AVE SUITE B
LONG BEACH, CA 90813
The Broccoli King, Inc, Olympic Extracts
Lic. # CDPH-10002790
2063 Pacific Ave Long Beach, CA 90806

Batch#: PSH-1025
Batch Size Collected: 15 units
Total Batch Size: 500 units
Collected: 08/02/2023; Received: 08/02/2023
Completed: 08/11/2023

METRC Sample: 1A4060300009C4C000029857; METRC Batch: 1A40603000032DA000001064;

Moisture NT Water Activity NT	Total THC 858.13 mg/unit	Total CBD 0.63 mg/unit	Total Cannabinoids 889.65 mg/unit	Total Terpenes 53.480 mg/g
	Label: 888.7 mg/unit % Difference: 3.44%			

Summary	SOP Used	Date Tested	
Batch			Pass
Cannabinoids	POT-PREP-001	08/09/2023	Pass
Terpenes	TERP-PREP-001	08/10/2023	Complete
Residual Solvents	RS-PREP-001	08/09/2023	Pass
Microbials	MICRO-PREP-001	08/10/2023	Pass
Mycotoxins	PESTMYCO-LC-PREP-001	08/10/2023	Pass
Heavy Metals	HM-PREP-001	08/09/2023	Pass
Foreign Matter	FM-PREP-001	08/08/2023	Pass
Pesticides	PESTMYCO-LC-PREP-001 / PEST-GC-PREP-001	08/10/2023	Pass



Scan to see results

Cannabinoid Profile

1 Unit = vape cartridge, 1 g.

Analyte	LOQ (mg/g)	LOD (mg/g)	Labeled	% Diff	%	mg/g	mg/unit	Analyte	LOQ (mg/g)	LOD (mg/g)	Labeled	% Diff	%	mg/g	mg/unit		
THCa	0.3680	0.0924	-	-	1.419	14.19	14.19	CBGa	0.3965	0.1322	-	-	0.862	8.62	8.62		
Δ9-THC	0.3680	0.1024	-	-	83.640	836.40	836.40	CBG	0.3920	0.1307	-	-	0.944	9.44	9.44		
Δ8-THC	0.3680	0.0506	-	-	0.929	9.29	9.29	CBL	0.3680	0.1106	-	-	ND	ND	ND		
THCV	0.3680	0.0423	-	-	0.499	4.99	4.99	CBN	0.3680	0.0780	-	-	0.304	3.04	3.04		
CBDa	0.3680	0.0951	-	-	ND	ND	ND	CBT	0.3680	0.0906	-	-	0.149	1.49	1.49		
CBD	0.3680	0.0815	-	-	0.063	0.63	0.63	Total THC					888.7 mg/unit	3.44%	85.81	858.13	858.13
CBDV	0.3680	0.0421	-	-	ND	ND	ND	Total CBD					-	0.06	0.63	0.63	
CBC	0.4549	0.1516	-	-	0.436	4.36	4.36	Total						88.97	889.65	889.65	

Total THC=THCa * 0.877 + d9-THC + d8-THC; Total CBD = CBDa * 0.877 + CBD. LOD= Limit of Detection, LOQ= Limit of Quantitation, ND= Not Detected, NR= Not Reported. Potency is reported on a dry weight basis. Instrumentation and analysis SOPs used: Cannabinoids:UHPLC-DAD(POT-INST-005),Moisture:Moisture Analyzer(MOISTURE-001),Water Activity:Water Activity Meter(WA-INST-002), Foreign Material:Microscope(FOREIGN-001). Density measured at 19-24 °C, Water Activity measured at 0-90% RH. All QA submitted by the client, All CA State Compliance sampled using SAMPL-SOP-001.

Terpene Profile

Analyte	LOQ (mg/g)	LOD (mg/g)	%	mg/g	Analyte	LOQ (mg/g)	LOD (mg/g)	%	mg/g
β-Myrcene	0.153	0.017	1.5809	15.809	Cedrol	0.151	0.039	ND	ND
β-Caryophyllene	0.684	0.228	1.4565	14.565	cis-Nerolidol	0.264	0.088	ND	ND
α-Pinene	0.151	0.028	0.5683	5.683	Citronellol	0.598	0.138	ND	ND
α-Humulene	0.151	0.032	0.5425	5.425	δ-3-Carene	0.306	0.030	ND	ND
δ-Limonene	0.306	0.053	0.4105	4.105	Eucalyptol	0.221	0.074	ND	ND
β-Pinene	0.306	0.020	0.2959	2.959	Fenchol	0.152	0.029	ND	ND
Linalool	0.154	0.030	0.1996	1.996	Fenchone	0.151	0.010	ND	ND
α-Bisabolol	0.162	0.054	0.1790	1.790	γ-Terpinene	0.152	0.033	ND	ND
α-Terpineol	0.154	0.049	0.0509	0.509	Geraniol	0.609	0.138	ND	ND
Terpinolene	0.154	0.014	0.0439	0.439	Geranyl Acetate	0.151	0.020	ND	ND
Camphene	0.151	0.009	0.0200	0.200	Isoborneol	0.151	0.022	ND	ND
α-Cedrene	0.151	0.029	ND	ND	Menthol	0.170	0.057	ND	ND
α-Terpinene	0.151	0.045	ND	ND	(-)-Guaiaol	0.154	0.033	ND	ND
β-Eudesmol	0.192	0.064	ND	ND	Pulegone	0.178	0.059	ND	ND
Borneol	0.154	0.027	<LOQ	<LOQ	p-Cymene	1.068	0.356	ND	ND
Camphor	0.371	0.124	ND	ND	trans-Nerolidol	0.230	0.077	ND	ND
Caryophyllene Oxide	0.602	0.129	<LOQ	<LOQ	Total			5.3480	53.480

NR= Not Reported (no analysis was performed), ND= Not Detected (the concentration is less than the Limit of Detection (LOD)). Analytical instrumentation used: HS-GC-MS; samples analyzed according to SOP TERP-INST-003.



Infinite Chemical Analysis Labs
8312 Miramar Mall
San Diego, CA
(858) 623-2740
www.infiniteCAL.com
Lic# C8-0000047-LIC

Josh M Swider

Josh Swider
Lab Director, Managing Partner
08/11/2023

Confident Cannabis
All Rights Reserved
support@confidentcannabis.com
(866) 506-5866
www.confidentcannabis.com



This product has been tested by Infinite Chemical Analysis, LLC using valid testing methodologies and a quality system as required by state law. All LQC samples were performed and met the prescribed acceptance criteria in 16 CCR section 15730, pursuant to 16 CCR section 15726(e)(13). Values reported relate only to the product tested. Infinite Chemical Analysis, LLC makes no claims as to the efficacy, safety or other risks associated with any detected or non-detected levels of any compounds reported herein. This Certificate shall not be reproduced except in full, without the written approval of Infinite Chemical Analysis, LLC.



Certificate of Analysis

Regulatory Compliance Testing

2 of 3

ICAL ID: C 20230802-014
Sample: CA230802-005-012
Purple Dream - 1g PUSHcart
Strain: Purple Dream - 1g PUSHcart
Category: Concentrates & Extracts
Type: Vape

LB Atlantis, LLC
Lic. # C11-0000369-LIC
1445 SANTA FE AVE SUITE B
LONG BEACH, CA 90813
The Broccoli King, Inc, Olympic Extracts
Lic. # CDPH-10002790
2063 Pacific Ave Long Beach, CA 90806

Batch#: PSH-1025
Batch Size Collected: 15 units
Total Batch Size: 500 units
Collected: 08/02/2023; Received: 08/02/2023
Completed: 08/11/2023

METRC Sample: 1A4060300009C4C000029857; METRC Batch: 1A40603000032DA000001064;

Residual Solvent Analysis

Category 1	LOQ	LOD	Limit	Status	Category 2	LOQ	LOD	Limit	Status		
	µg/g	µg/g	µg/g	µg/g		µg/g	µg/g	µg/g	µg/g		
1,2-Dichloro-Ethane	ND	0.509	0.17	1	Pass	Acetone	ND	51.246	17.082	5000	Pass
Benzene	ND	0.064	0.021	1	Pass	Acetonitrile	ND	0.359	0.12	410	Pass
Chloroform	ND	0.108	0.036	1	Pass	Butane	16.4	4.849	0.971	5000	Pass
Ethylene Oxide	ND	0.579	0.153	1	Pass	Ethanol	ND	7.843	2.614	5000	Pass
Methylene-Chloride	ND	0.7288	0.127	1	Pass	Ethyl-Acetate	ND	2.288	0.313	5000	Pass
Trichloroethene	ND	0.145	0.018	1	Pass	Ethyl-Ether	ND	3.548	1.183	5000	Pass
						Heptane	ND	2.859	0.687	5000	Pass
						n-Hexane	ND	0.2807	0.066	290	Pass
						Isopropanol	ND	3.8401	1.28	5000	Pass
						Methanol	ND	8.917	2.972	3000	Pass
						Pentane	ND	4.271	0.962	5000	Pass
						Propane	ND	13.302	4.434	5000	Pass
						Toluene	1.5	0.864	0.088	890	Pass
						Xylenes	ND	2.572	0.216	2170	Pass

NR= Not Reported (no analysis was performed), ND= Not Detected (the concentration is less than the Limit of Detection (LOD)). Analytical instrumentation used: HS-GC-MS; samples analyzed according to SOP RS-INST-003.

Heavy Metal Screening

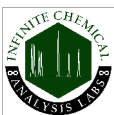
	LOQ	LOD	Limit	Status	
	µg/g	µg/g	µg/g		
Arsenic	ND	0.009	0.003	0.2	Pass
Cadmium	ND	0.002	0.001	0.2	Pass
Lead	0.200	0.004	0.001	0.5	Pass
Mercury	ND	0.014	0.005	0.1	Pass

NR= Not Reported (no analysis was performed), ND= Not Detected (the concentration is less than the Limit of Detection (LOD)). Analytical instrumentation used: ICP-MS; samples analyzed according to SOP HM-INST-003.

Microbiological Screening

	Limit	Result	Status
	CFU/g	CFU/g	
Aspergillus flavus		Not Detected	Pass
Aspergillus fumigatus		Not Detected	Pass
Aspergillus niger		Not Detected	Pass
Aspergillus terreus		Not Detected	Pass
STEC		Not Detected	Pass
Salmonella SPP		Not Detected	Pass

ND=Not Detected. Analytical instrumentation used:qPCR; samples analyzed according to SOP MICRO-INST-001.



Infinite Chemical Analysis Labs
8312 Miramar Mall
San Diego, CA
(858) 623-2740
www.infiniteCAL.com
Lic# C8-0000047-LIC

Josh M Swider

Josh Swider
Lab Director, Managing Partner
08/11/2023

Confident Cannabis
All Rights Reserved
support@confidentcannabis.com
(866) 506-5866
www.confidentcannabis.com



This product has been tested by Infinite Chemical Analysis, LLC using valid testing methodologies and a quality system as required by state law. All LQC samples were performed and met the prescribed acceptance criteria in 16 CCR section 15730, pursuant to 16 CCR section 15726(e)(13). Values reported relate only to the product tested. Infinite Chemical Analysis, LLC makes no claims as to the efficacy, safety or other risks associated with any detected or non-detected levels of any compounds reported herein. This Certificate shall not be reproduced except in full, without the written approval of Infinite Chemical Analysis, LLC.



Certificate of Analysis

Regulatory Compliance Testing

3 of 3

ICAL ID: C 20230802-014
Sample: CA230802-005-012
Purple Dream - 1g PUSHcart
Strain: Purple Dream - 1g PUSHcart
Category: Concentrates & Extracts
Type: Vape

LB Atlantis, LLC
Lic. # C11-0000369-LIC
1445 SANTA FE AVE SUITE B
LONG BEACH, CA 90813
The Broccoli King, Inc, Olympic Extracts
Lic. # CDPH-10002790
2063 Pacific Ave Long Beach, CA 90806

Batch#: PSH-1025
Batch Size Collected: 15 units
Total Batch Size: 500 units
Collected: 08/02/2023; Received: 08/02/2023
Completed: 08/11/2023

METRC Sample: 1A4060300009C4C000029857; METRC Batch: 1A40603000032DA000001064;

Chemical Residue Screening

Category 1	LOQ	LOD	Status	Mycotoxins	LOQ	LOD	Limit	Status		
	µg/g	µg/g	µg/g		µg/kg	µg/kg	µg/kg	µg/kg		
Aldicarb	ND	0.030	0.008	Pass	B1	ND	8.98	2.96	Tested	
Carbofuran	ND	0.030	0.005	Pass	B2	ND	10.17	3.36	Tested	
Chlordane	ND	0.075	0.025	Pass	G1	ND	5.25	1.73	Tested	
Chlorfenapyr	ND	0.075	0.025	Pass	G2	ND	6.26	2.07	Tested	
Chlorpyrifos	ND	0.046	0.015	Pass	Ochratoxin A	ND	13.37	4.41	20	Pass
Coumaphos	ND	0.030	0.004	Pass	Total Aflatoxins	ND		20	Pass	
Daminozide	ND	0.053	0.018	Pass						
Dichlorvos	ND	0.055	0.018	Pass						
Dimethoate	ND	0.030	0.006	Pass						
Ethoprophos	ND	0.030	0.006	Pass						
Etofenprox	ND	0.030	0.004	Pass						
Fenoxycarb	ND	0.030	0.004	Pass						
Fipronil	ND	0.050	0.017	Pass						
Imazalil	ND	0.030	0.009	Pass						
Methiocarb	ND	0.030	0.002	Pass						
Mevinphos	ND	0.030	0.008	Pass						
Paclbutrazol	ND	0.030	0.009	Pass						
Parathion Methyl	ND	0.024	0.008	Pass						
Propoxur	ND	0.030	0.008	Pass						
Spiroxamine	ND	0.030	0.006	Pass						
Thiacloprid	ND	0.030	0.005	Pass						

Category 2	LOQ	LOD	Limit	Status	Category 2	LOQ	LOD	Limit	Status		
	µg/g	µg/g	µg/g	µg/g		µg/g	µg/g	µg/g	µg/g		
Abamectin	ND	0.099	0.033	0.1	Pass	Kresoxim Methyl	ND	0.030	0.007	0.1	Pass
Acephate	ND	0.030	0.007	0.1	Pass	Malathion	<LOQ	0.030	0.003	0.5	Pass
Acequinocyl	ND	0.046	0.015	0.1	Pass	Metalaxyl	ND	0.030	0.005	2	Pass
Acetamiprid	ND	0.030	0.005	0.1	Pass	Methomyl	ND	0.030	0.009	1	Pass
Azoxystrobin	ND	0.030	0.005	0.1	Pass	Myclobutanil	ND	0.030	0.007	0.1	Pass
Bifenazate	ND	0.030	0.007	0.1	Pass	Naled	ND	0.030	0.008	0.1	Pass
Bifenthrin	ND	0.030	0.004	3	Pass	Oxamyl	ND	0.030	0.007	0.5	Pass
Boscalid	ND	0.030	0.008	0.1	Pass	Pentachloronitrobenzene	ND	0.054	0.018	0.1	Pass
Captan	ND	0.358	0.120	0.7	Pass	Permethrin	<LOQ	0.030	0.002	0.5	Pass
Carbaryl	ND	0.030	0.006	0.5	Pass	Phosmet	ND	0.030	0.005	0.1	Pass
Chlorantraniliprole	ND	0.030	0.009	10	Pass	Piperonyl Butoxide	ND	0.030	0.003	3	Pass
Clofentezine	ND	0.030	0.002	0.1	Pass	Prallethrin	ND	0.071	0.023	0.1	Pass
Cyfluthrin	ND	0.056	0.019	2	Pass	Propiconazole	ND	0.030	0.009	0.1	Pass
Cypermethrin	ND	0.181	0.060	1	Pass	Pyrethrins	ND	0.030	0.003	0.5	Pass
Diazinon	ND	0.030	0.005	0.1	Pass	Pyridaben	ND	0.030	0.002	0.1	Pass
Dimethomorph	ND	0.030	0.005	2	Pass	Spinetoram	ND	0.030	0.001	0.1	Pass
Etoxazole	ND	0.030	0.004	0.1	Pass	Spinosad	ND	0.030	0.001	0.1	Pass
Fenhexamid	ND	0.034	0.011	0.1	Pass	Spiromesifen	ND	0.030	0.009	0.1	Pass
Fenpyroximate	ND	0.030	0.004	0.1	Pass	Spirotetramat	ND	0.030	0.008	0.1	Pass
Flonicamid	ND	0.035	0.012	0.1	Pass	Tebuconazole	ND	0.030	0.006	0.1	Pass
Fludioxonil	ND	0.036	0.012	0.1	Pass	Thiamethoxam	ND	0.030	0.008	5	Pass
Hexythiazox	ND	0.030	0.001	0.1	Pass	Trifloxystrobin	ND	0.030	0.003	0.1	Pass
Imidacloprid	ND	0.033	0.011	5	Pass						

Other Analyte(s):

NR= Not Reported (no analysis was performed), ND= Not Detected (the concentration is less than the Limit of Detection (LOD)). Analytical instrumentation used: LC-MS-MS & GC-MS-MS; samples analyzed according to SOPs PESTMYCO-LC-INST-004 and PEST-GC-INST-003.



Infinite Chemical Analysis Labs
8312 Miramar Mall
San Diego, CA
(858) 623-2740
www.infiniteCAL.com
Lic# C8-000047-LIC

Josh M Swider

Josh Swider
Lab Director, Managing Partner
08/11/2023

Confident Cannabis
All Rights Reserved
support@confidentcannabis.com
(866) 506-5866
www.confidentcannabis.com



This product has been tested by Infinite Chemical Analysis, LLC using valid testing methodologies and a quality system as required by state law. All LQC samples were performed and met the prescribed acceptance criteria in 16 CCR section 15730, pursuant to 16 CCR section 15726(e)(13). Values reported relate only to the product tested. Infinite Chemical Analysis, LLC makes no claims as to the efficacy, safety or other risks associated with any detected or non-detected levels of any compounds reported herein. This Certificate shall not be reproduced except in full, without the written approval of Infinite Chemical Analysis, LLC.